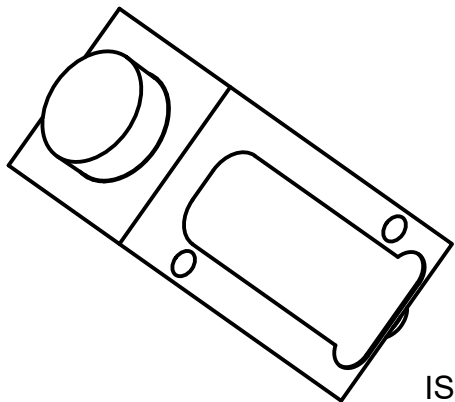
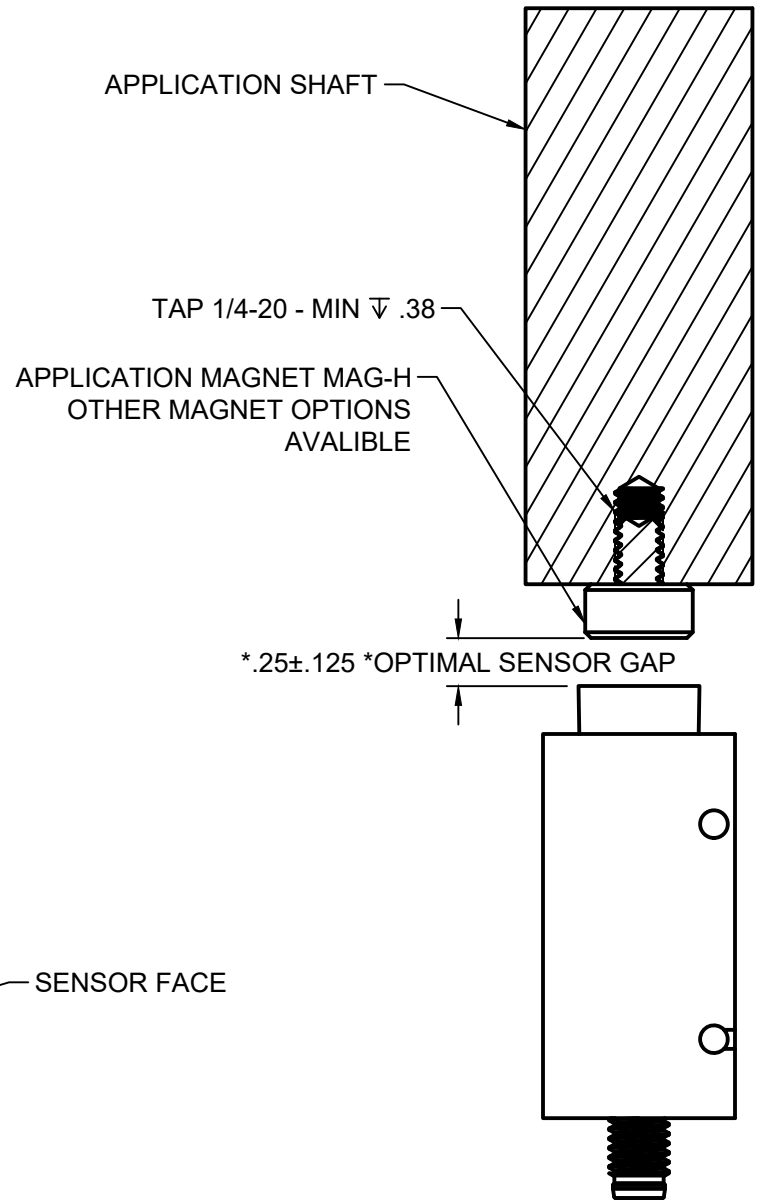
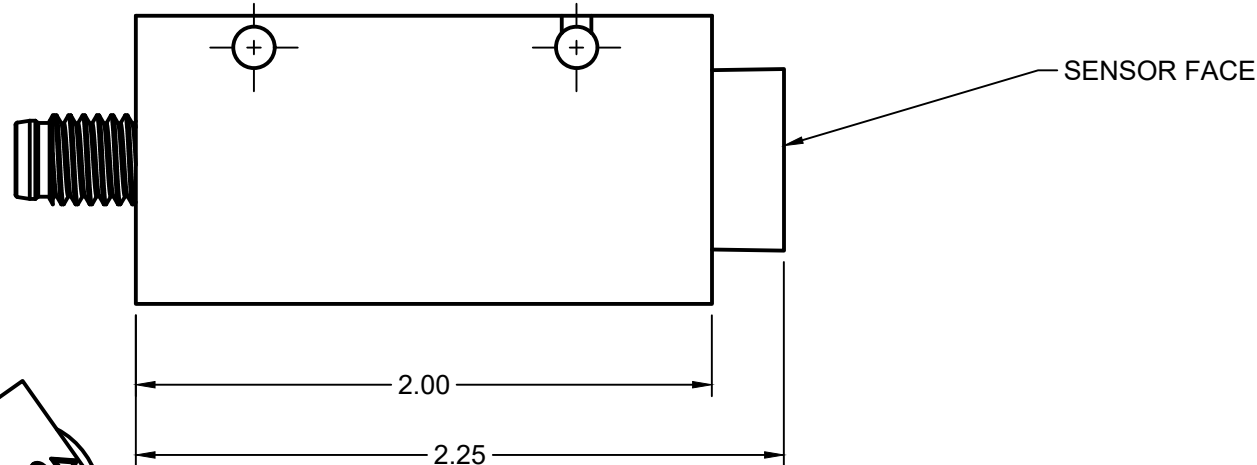
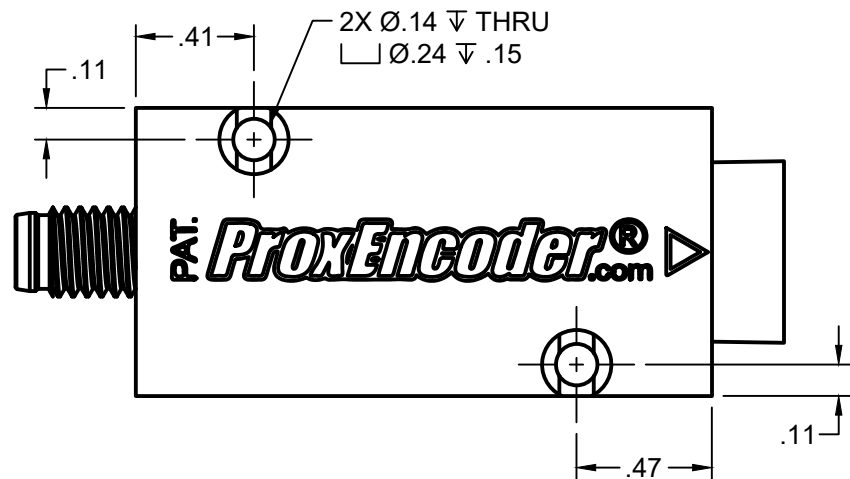
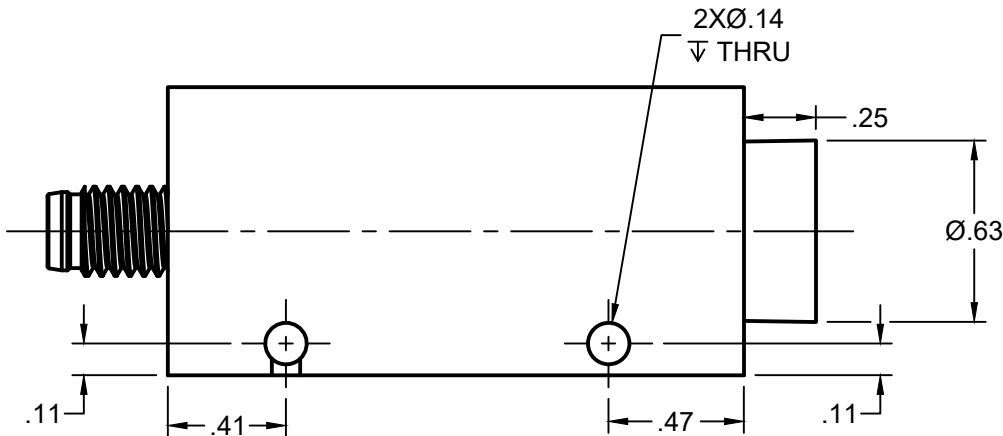
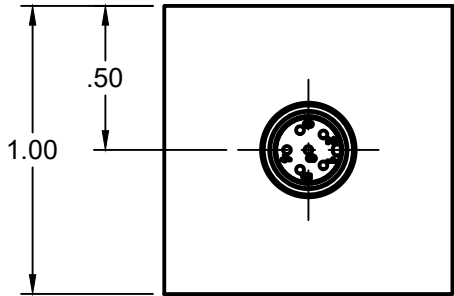
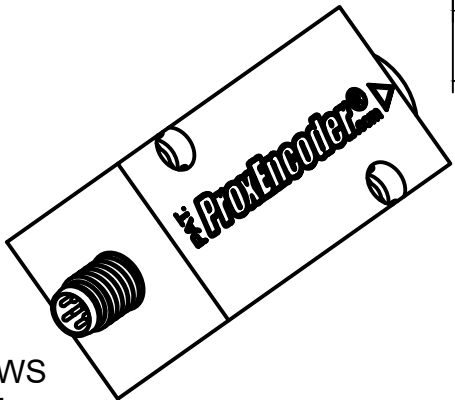


INTERFACE DETAILS AND NOTES:

1. APPLICATION SHAFT Ø.375" MINIMUM WHEN USING MAG-H APPLICATION MAGNET. TAP 1/4-20 A MINIMUM DEPTH OF .375".
2. 0.25" SENSOR GAP DISTANCE IS OPTIMAL FOR NORMAL INSTALLATION. THIS IS DEPENDNT ON MOUNT AND MATERIALS.

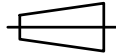


ISOMETRIC VIEWS  
SCALE:NONE



CONFIDENTIAL - ALL RIGHTS RESERVED  
DISCLOSURE OR DUPLICATION PROHIBITED

UNLESS OTHERWISE SPECIFIED:  
DIMENSIONS ARE IN DECIMAL INCH



ALL DIMENSIONS ARE REFERENCE

DRAWN:  
T.WOLFF

DATE:  
6/3/2024

CHECKED:  
A.MINSTER

APPROVED:  
6/28/2024

PART #:  
PEBX-EE-CUST ASSY

EPICOR #:

REV.

SIZE:  
B

**JORAL**

WWW.JORALLLC.COM

DESCRIPTION:  
18MM PROXENCODER  
NON-CONTACT ROTARY

SCALE:  
3:2

SHEET:  
1/1